

# 2D-GC-MS

## Two-dimensional Gas Chromatography – Mass Spectrometry

FOR IDENTIFYING VOLATILE COMPOUNDS FROM CHALLENGING MATRIXES



### Comprehensive GC-MS System by Shimadzu

- GCMS-QP2010 *Ultra* with Zoex ZX-1 Modulator
- SPL Split/Splitless + Optic-4 multimode injectors
- MS + FID detectors
- AOC-5000 Plus sampling robot
- Cold trap

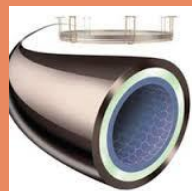
### SAMPLING

Liquid sample  
Head Space  
Thermal desorption  
DMI (difficult matrix introduction)



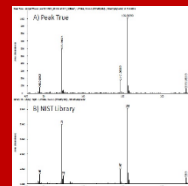
### CHROMATOGRAPHY SEPARATION

Two GC columns separating compounds



### DETECTION

Comparing MS spectrum with MS library spectras



### STUDY EXAMPLES

Monitoring compounds of pyrolysis distillates  
Monitoring fungi volatiles from infected spruces  
Monitoring thermal breakdown of silica coatings  
Monitoring exhaled breath compounds relating diets  
Monitoring what is "mysterious stuff" in various samples  
Monitoring resin acids and from coniferous resin salves  
Monitoring volatile compounds of mushrooms  
Recognizing plasticizers from plastics  
Detecting smelling contaminant

What's the smell?

What compounds are in this?

### CONTACT

Arto Koistinen +358 44 716 3260 [arto.koistinen@uef.fi](mailto:arto.koistinen@uef.fi)

Kaisa Raninen +358 50 514 5998 [kaisa.raninen@uef.fi](mailto:kaisa.raninen@uef.fi)