

2D-GC-MS

Two-dimensional Gas Chromatography – Mass Spectrometry

FOR IDENTIFYING VOLATILE COMPOUNDS FROM CHALLENGING MATRIXES



Comprehensive GC-MS System by Shimadzu

- GCMS-QP2010 *Ultra* with Zoex ZX-1 Modulator
- SPL Split/Splitless + Optic-4 multimode injectors
- MS + FID detectors
- AOC-5000 Plus sampling robot
- Cold trap

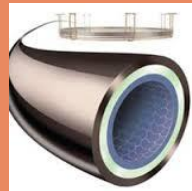
SAMPLING

Liquid sample
Head Space
Thermal desorption
DMI (difficult matrix introduction)



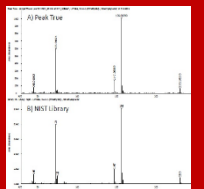
CHROMATOGRAPHY SEPARATION

Two GC columns separating compounds



DETECTION

Comparing MS spectrum with MS library spectras



STUDY EXAMPLES

Monitoring compounds of pyrolysis distillates
Monitoring fungi volatiles from infected spruces
Monitoring thermal breakdown of silica coatings
Monitoring exhaled breath compounds relating diets
Monitoring what is "mysterious stuff" in various samples
Monitoring resin acids from coniferous resin salves
Monitoring volatile compounds of mushrooms
Recognizing plasticizers from plastics
Detecting smelling contaminant

What's the smell?

What compounds are in this?

CONTACT

Laura Tomppo, + 358 40 355 2541, laura.tomppo@uef.fi

Kaisa Raninen, +358 50 514 5998, kaisa.raninen@uef.fi